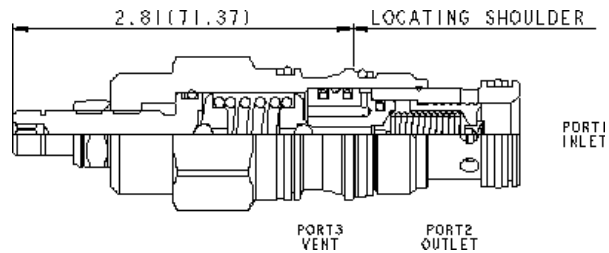
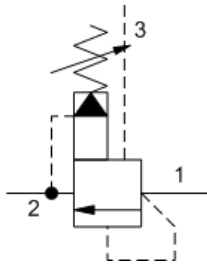


MODEL
RVEA-LAN

Ventable, pilot operated, balanced piston relief valve
CAPACITY: 120 L/min. | **CAVITY:** T-2A



Ventable, pilot-operated, balanced piston relief cartridges are normally closed pressure regulating valves. When the pressure at the inlet (port 1) reaches the valve setting, the valve starts to open to tank (port 2), throttling flow to regulate the pressure. They provide a vent port (port 3) that connects between the main piston and pilot stage to provide for remote control by other pilot or 2-way valves. These valves are accurate, have low pressure rise vs. flow, they are smooth and quiet, and are moderately fast.

CONFIGURATION

L	Control	Standard Screw Adjustment
A	Adjustment Range	100 - 3000 psi (7 - 210 bar), 1000 psi (70 bar) Standard Setting
N	Seal Material	Buna-N
(none)	Material/Coating	Standard Material/Coating

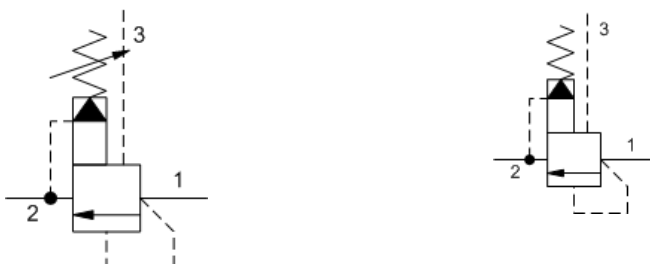
NOTES

For cartridges configured with an O control (panel mount handknob), a .75 in. (19 mm) diameter hole is required in the panel.

TECHNICAL DATA

Cavity	T-2A
Series	2
Capacity	120 L/min.
Factory Pressure Settings Established at	15 L/min.
Maximum Operating Pressure	350 bar
Control Pilot Flow	0,16 - 0,25 L/min.
Response Time - Typical	10 ms
Maximum Valve Leakage at 110 SUS (24 cSt)	50 cc/min.@70 bar
Adjustment - Number of Clockwise Turns to Increase Setting	5
Valve Hex Size	28,6 mm
Valve Installation Torque	61 - 68 Nm
Adjustment Screw Internal Hex Size	4 mm
Adjustment Locknut/Cap Hex Size	15 mm
Adjustment Nut Torque	9 - 10 Nm
Seal kit - Cartridge	Buna: 990-202-007
Seal kit - Cartridge	Polyurethane: 990-002-002
Seal kit - Cartridge	Viton: 990-202-006

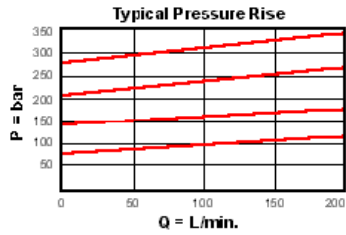
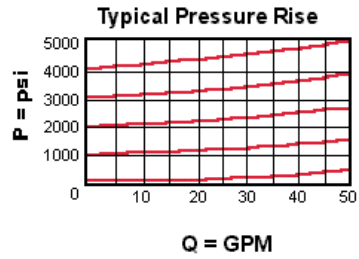
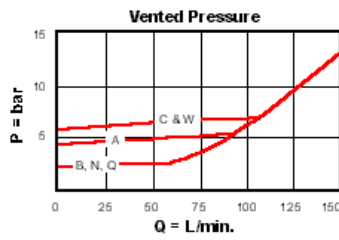
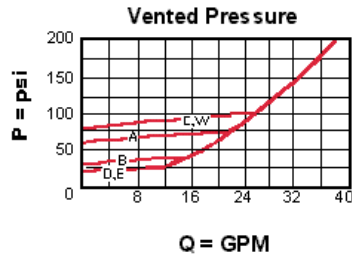
SYMBOLS



TECHNICAL FEATURES

- A remote pilot relief on port 3 (vent) will control the valve below its own setting.
- Will accept maximum pressure at port 2; suitable for use in cross port relief circuits. If used in cross port relief circuits, consider spool leakage.
- Main stage orifice is protected by a 150 micron stainless steel screen.
- Not suitable for use in load holding applications due to spool leakage.
- Back pressure on the tank port (port 2) is directly additive to the valve setting at a 1:1 ratio.
- Incorporates the Sun floating style construction to minimize the possibility of internal parts binding due to excessive installation torque and/or

PERFORMANCE CURVES



CONFIGURATION OPTIONS

CONTROL

Preferred Options	L	Standard Screw Adjustment
	C	Tamper Resistant - Factory Set
Standard Options	K	Handknob
	O	Handknob with Panel Mount

ADJUSTMENT RANGE

Preferred Options	A	100 - 3000 psi (7 - 210 bar), 1000 psi (70 bar) Standard Setting
	W	150 - 4500 psi (10,5 - 315 bar), 1000 psi (70 bar) Standard Setting
	B	50 - 1500 psi (3,5 - 105 bar), 1000 psi (70 bar) Standard Setting
Standard Options	C	150 - 6000 psi (10,5 - 420 bar), 1000 psi (70 bar) Standard Setting
	D	25 - 800 psi (1,7 - 55 bar), 400 psi (28 bar) Standard Setting
	E	25 - 400 psi (1,7 - 28 bar), 200 psi (14 bar) Standard Setting

SEAL MATERIAL

Preferred Options	N	Buna-N
Standard Options	V	Viton

MATERIAL/COATING

Standard Options		Standard Material/Coating
	/AP	Stainless Steel, Passivated